

# Trumen



This unique two-story home features a spacious living room with archways, half bath, kitchen with center island and snack bar and dining area with sliders to a deck. The upstairs features a master bedroom with walk-in closet and master bath, two additional bedrooms, second full bath and laundry area. The lower level is partially framed and can be finished to include a family room, full bath and bedroom.

## Features

- 1577 Square Feet
- Living Room with Archways
- Island with Snack Bar
- Master Bedroom Suite
- 2-3 Additional Bedrooms
- 2.5 – 3.5 Baths
- Optional Family Room
- 2-Stall Garage

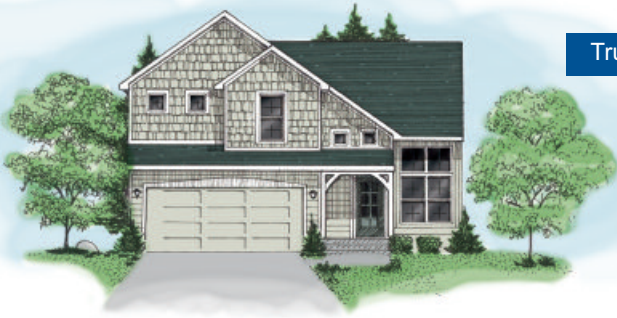
Square footage is approximate and elevations and floor plans are conceptual and not intended to be a precise description or to scale.

KBH Homes reserves the right to modify plans, specifications, colors, maps and pricing without notice or obligation. All plans are copyrighted and may not be reproduced without written consent from KBH Homes.

Trumen I



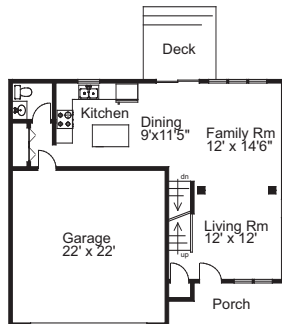
Trumen II



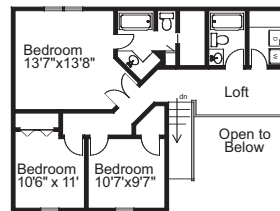
Trumen III



Main Level



Upper Level



Lower Level

